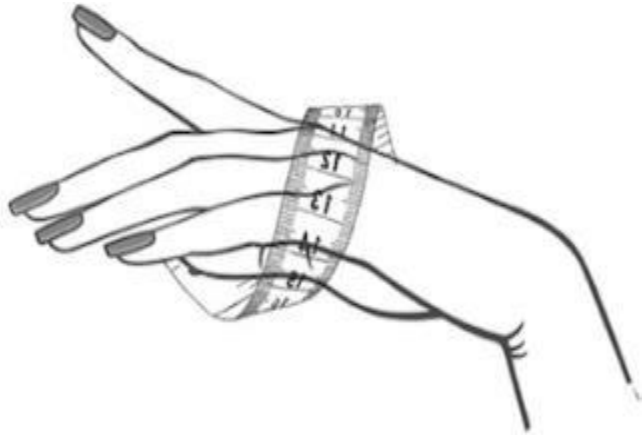




Bracelets (Rigid)

Measure the broadest part of your arm as illustrated then choose your size according to the table below.

Length (cm)	Length,(in)	Standard diameter,(mm)	Bracelet size, (abbrev)
16 - 20	6.3 – 7.8	64	Small (S)
21 - 25	8.2 – 9.8	70	Large (L)



For persons that prefer rolling their bracelet over their arms choose the size closest to the measurement taken (round down).

For persons who prefer a loose fit, add 0.5 cm to your measurement then choose the size closest to that (round up).

Bracelets (Adjustable)/Cuffs



For adjustable bracelets an intermediate size is accommodated by each size. For persons who prefer a tight fit round down to the nearest size and vice versa for a more loose fit (round up).



Measure the broadest part of your wrist then choose measurement according to the table below

Wrist measurement (cm)	Wrist measurement (in)	Standard diameter(mm)	Bracelet size, (abbrev)
16 - 20	6.3 – 7.8	25*45*56	Small (S)
21 - 25	8.2 – 9.8	29*50*64	Large (L)

Rings



Stacking rings (multiple rings on one finger); please consider that the rings should be one size bigger than your regular size.

Ring sets for multiple fingers; please measure the smallest ring size preference. Match the measurement to the nearest ring size available; all other rings under this style will be accommodated.

Method - Measure the circumference of your preferred ring finger, round up the result to match the nearest ring size available. Compare measurements to the table below:



Finger measurement (cm)	Finger measurement (in)	Ring size
4.9	1.9	5
5.2	2	6
5.5	2.1	7
5.7	2.24	8
5.9	2.3	9
6.2	2.4	10

Necklaces

There are only three fits to this category. Each of which is named in accordance to how they fall on one's chest.

Some names under this category also include:

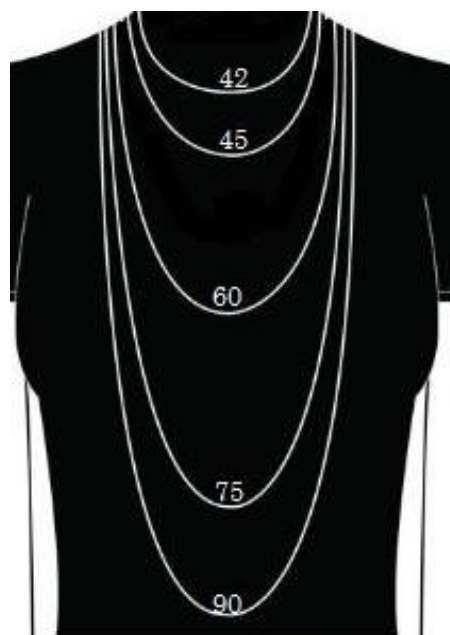
Layered – Multiple chains in one style – typically lies under **'necklace'**

Lariat – A lasso/riata type of style - typically lies under **'necklace'** and/or **'choker'**

These are style-based names that are accompanied by the length reference naming convention.

Please refer to the table below:

Length (cm)	Length (in)	Reference name
42	16.5	Choker
45	17.7	Choker
60	23.6	Necklace
75	29.5	Necklace
90	35.4	Pendant
100	39.4	Pendant



women (cm)

***Standard length of extension chain is 5 cm (2 in). All information represented here **takes** this length into account.

Rigid chokers

Please measure circumference of neck as illustrated, then find closest fit on table below:

Length (cm)	Length (in)	Size, (abbrev)
36	14.2	Small (S)
42	16.5	Medium (M)
45	17.7	Large (L)



Anklets



Use a string to measure the circumference of your ankle. Let the string lie on your ankle as you'd prefer the anklet to. Round off the measurement to the nearest size available:-

Ankle measurement (cm)	Ankle measurement (in)	Anklet sizes, (abbrev)
16 - 22	6.3 - 8.6	Small (S)
23 - 27	9 - 10.6	Medium (M)
28 -33	11 - 12.9	Large (L)

***Standard length of anklet extension chains is 5 cm (2 in), this length **is not** considered in the above.

*** All diagrams on this document are for reference only. Appearance and lengths will differ on different body types.



Horn Color Range

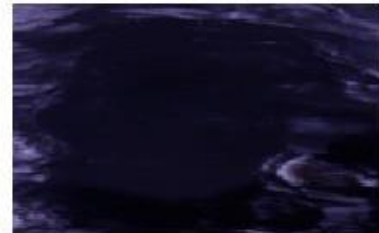
White



Natural



Black



***Please note that white and black horn have streaks with different colors such as orange and/or brown.

***Natural horn has either a white, brown or orange base color with multiple colored streaks.

***Not all products dubbed as 'white' 'natural' or 'black' will appear exactly as illustrated. Depth of hues in these colors cannot be controlled and highly depend on availability.

Kindly note that all our products are handmade by artisans one piece at a time. Due to this process, there may be a slight variation from product to product. Such variations are inherent in the manufacturing of handmade products please expect minor distinctions that will make your purchase unique to you and truly one-of-a-kind.

*** LA KWETU ***